

DATA SHEET

U 5.71

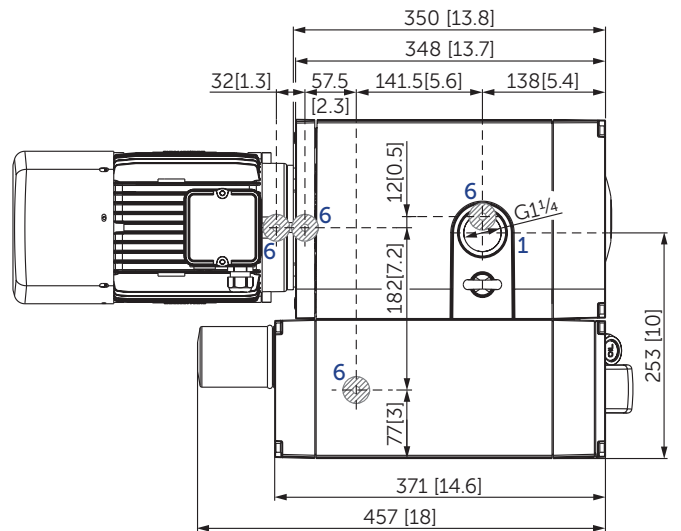
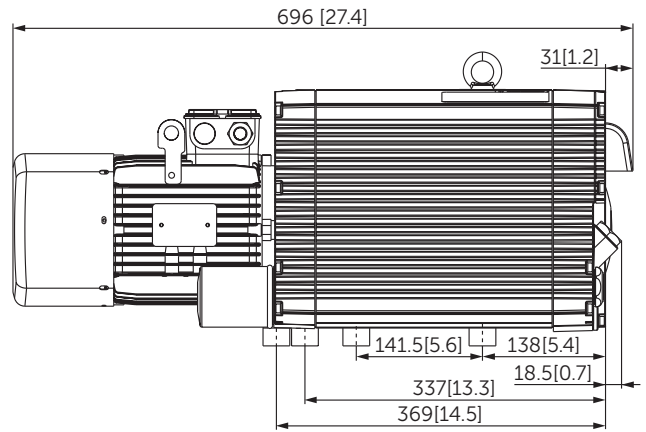
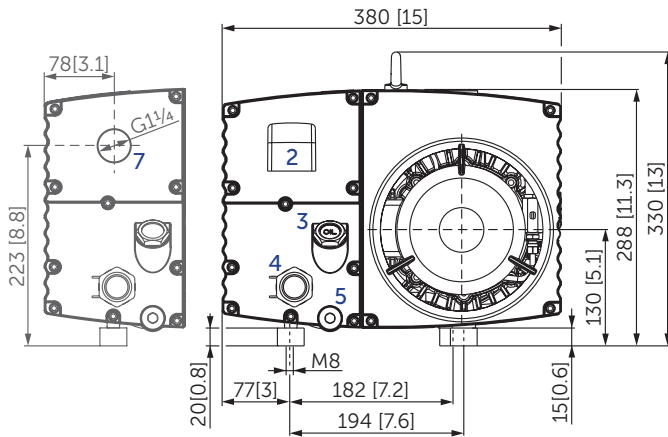
ROTARY VANE- VACUUM PUMPS

oil-lubricated

air-cooled

MAKE IT BECKER.





- 1 Vacuum connection (G1¼)
- 2 Exhaust air (diverter)
- 3 Oil filler cap (G¾)
- 4 Oil sight glas (G1)
- 5 Screw plug for oil drain (G½)
- 6 Rubber buffer position
- 7 optional: threaded connector for exhaust air (G1¼)
 - incl. gas ballast valve, non-return valve, oil separator and oil filter
 - The motor illustration may vary
 - Dimensions in mm [inch]

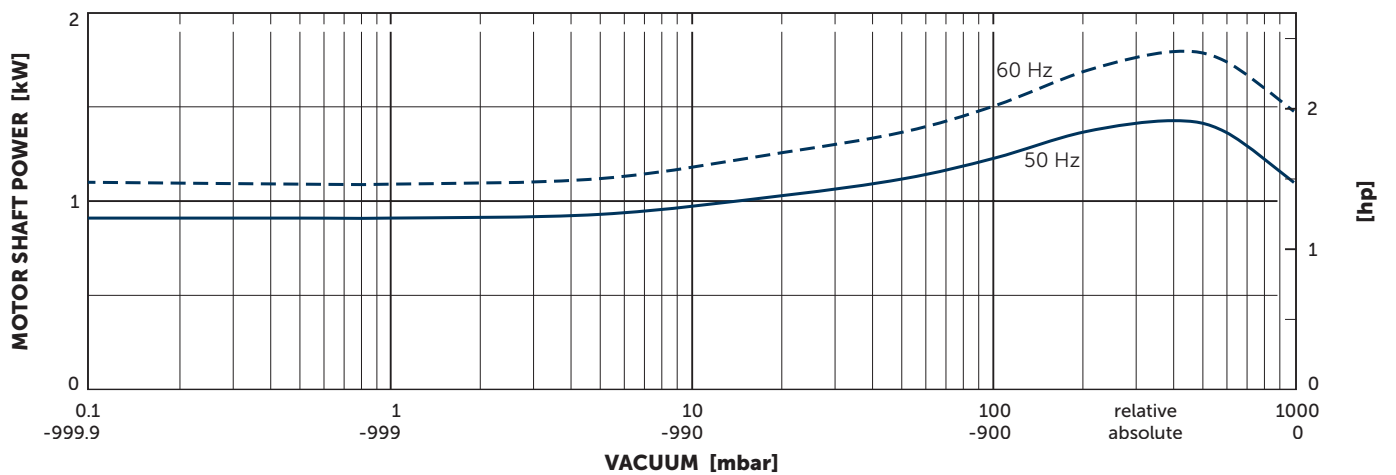
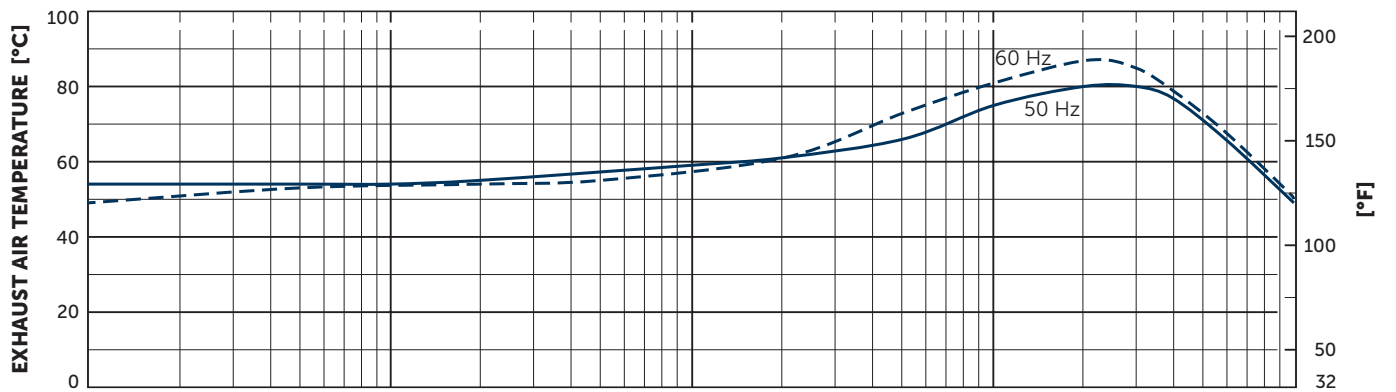
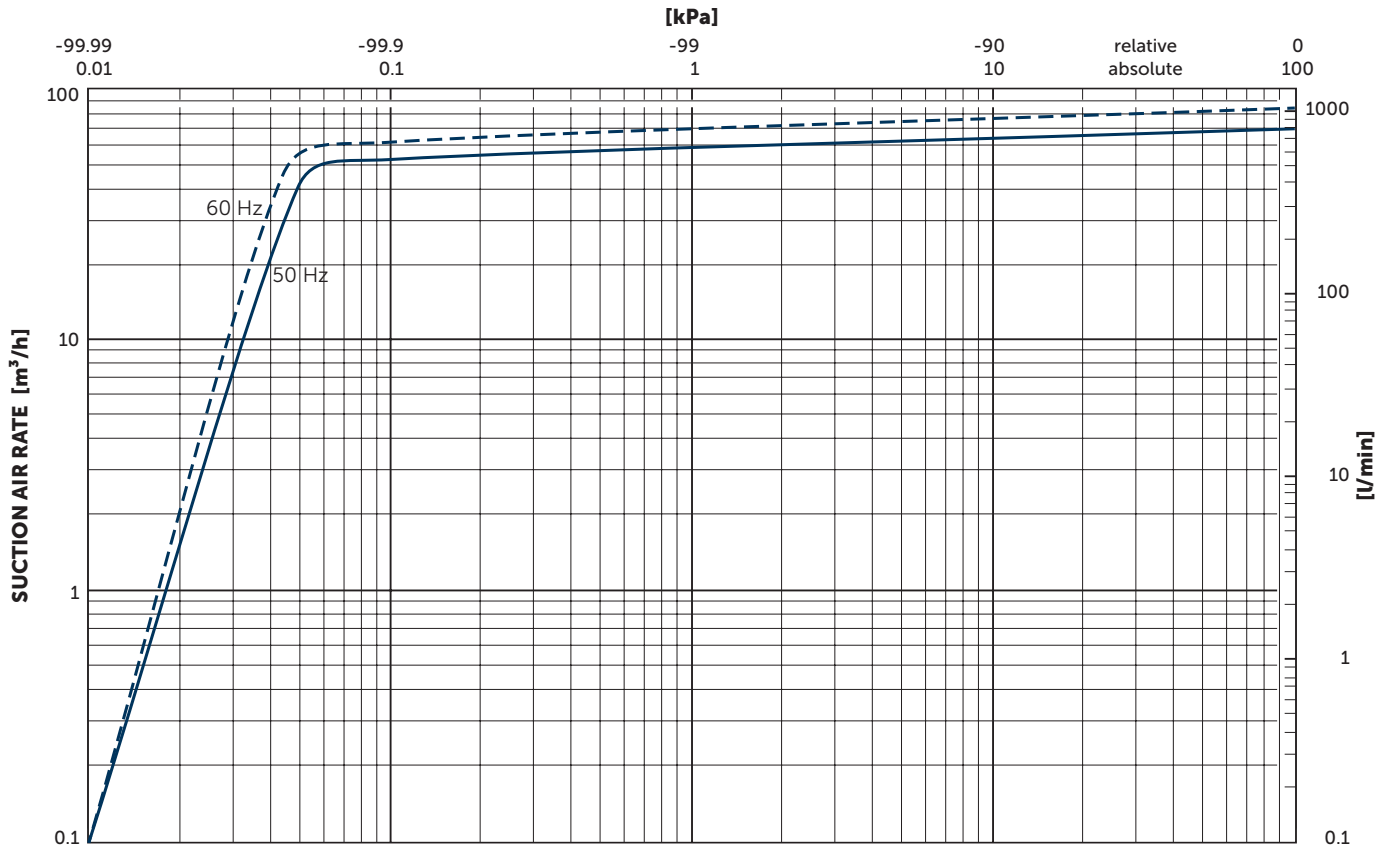
| Nominal capacity | | Vacuum absolute for continous operation | | Emission sound pressure level ¹⁾ | | Weight | Oil ²⁾ |
|-------------------|-------|---|----------|---|-------|--------|-------------------|
| m ³ /h | | mbar | | dB(A) | | kg | l |
| 50 Hz | 60 Hz | 50 Hz | 60 Hz | 50 Hz | 60 Hz | | |
| 70 | 84 | <0.1–400 | <0.1–400 | 64 | 67 | 60.5 | 2 |

¹⁾ According to DIN EN ISO 11203, accuracy class of measurement: class 2, extended measurement uncertainty: 3 dB
1 m [39.4 inch] distance, at medium load, both connection sides piped

²⁾ Becker Lube M100 mineral • S100 synthetic • SL100 food

▪ Gas ballast valve: vacuum 1,0 mbar absolute with opened gas ballast valve; water vapour tolerance max. 7 mbar; water vapour capacity max. 0.45 l/h (at 85°C operating temperature)

| 3~ Motors | | | | | | | | | | | |
|-----------|-------|-----------|-----|-------------------|---------|-------|----------------------------|-----|-------------------|------------------------|---|
| # | 50 Hz | | | | | 60 Hz | | | | | Version |
| | kW | V | IE3 | min ⁻¹ | A | kW | V | IE3 | min ⁻¹ | A | |
| 01 | 1.5 | Δ230/Y400 | IE3 | 1420 | 6.4/3.7 | 1.8 | Δ265/Y460 Δ230/Y400 | IE3 | 1715 1675 | 6.4/3.7 6.9/4.0 | UL(E365362) • CSA IP55 • ISO F • bimetal |
| 02 | | | | | | 1.8 | YY230/Y460 YY208 | IE3 | 1730 1705 | 6.8/3.4 7.0 | UL(E365362) • CSA IP55 • ISO F • bimetal |
| 03 | 1.5 | Δ200/Y350 | | 1440 | 7.4/4.3 | 1.8 | Δ220/Y380-400 Δ200/Y350 | IE3 | 1725 1705 | 7.3/4.2-4.0 7.6/4.4 | UL(E365362) • CSA IP55 • ISO F • bimetal |
| 04 | | | | | | 1.8 | Δ400/Y690 | IE3 | 1715 | 4.2/2.4 | UL(E365362) • CSA IP55 • ISO F • bimetal |
| 05 | 1.5 | Δ250/Y500 | IE3 | 1430 | 5.2/3.0 | 1.8 | Δ330/Y575 | IE3 | 1715 | 5.3/3.1 | UL(E365362) • CSA IP55 • ISO F • bimetal |



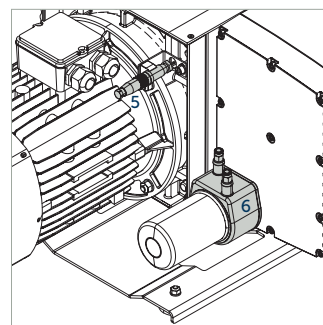
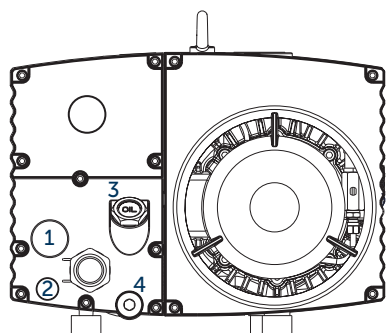
Suction air rate refers to the intake pressure
 Reference data (atmosphere): 1000 mbar (100 kPa), 20°C (68°F)
 Tolerance: ±10%

+ VARIANTS AND ACCESSORIES

- Optional **GAS BALLAST VALVE** for increased water vapour tolerance (3.0 mbar absolute)
water vapour tolerance: max. 36 mbar; water vapour capacity: max. 1.1 l/h (at 85°C operating temperature)
- **THREADED CONNECTOR** for exhaust air (G1¼)
- **U 5.71 O2-PACK**¹⁾ for packaging with an overconcentration of oxygen

ACCESSORIES

- External suction filter¹⁾
- Oil: Becker Lube M100 mineral, S100 synthetic and SL100 food



- 1 Oil level switch¹⁾ (G1)
- 2 Oil temperature monitor¹⁾ (G½)
- 3 Maintenance indicator¹⁾ (G¾) for oil separating elements
- 4 Ball valve (G½), with locking and hose connector 19 mm
- 5 Temperature sensor PT100
- 6 Water cooler U5.100-0-114.2¹⁾ with connectors for hoses with an external diameter of 8 mm



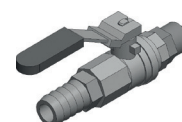
Oil level switch



Oil temperature monitor



Maintenance indicator



Ball valve

¹⁾ See separate data sheet

- Combination options on request



MAKE IT BECKER.